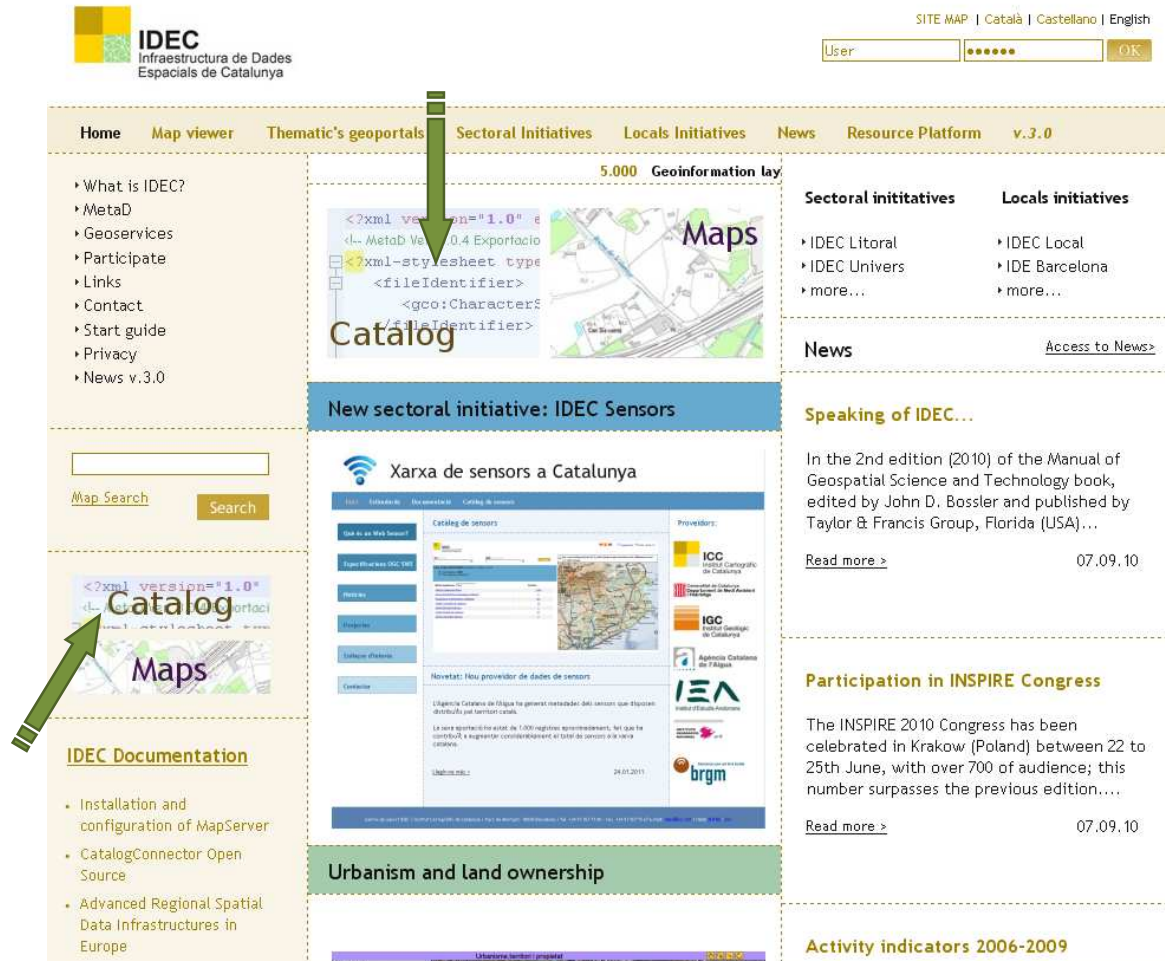


## Guide to search the IDEC catalog

IDEC catalog used to search, find, analyze and link geoinformation and geoservices that integrate with the IDEC network. It is based on metadata data on the services offered by different suppliers.

First you must go into the catalog, see the pathways in Figure 1.



The screenshot shows the IDEC website interface. At the top right, there is a language selector (SITE MAP | Català | Castellano | English) and a user login field. The main navigation bar includes links for Home, Map viewer, Thematic's geoportals, Sectoral Initiatives, Locals Initiatives, News, Resource Platform, and v.3.0. The left sidebar contains a 'Catalog' link and 'IDEC Documentation' with links to installation guides and data infrastructures. The main content area features a 'New sectoral initiative: IDEC Sensors' section with a map and XML metadata snippet, and a 'Xarxa de sensors a Catalunya' section with a map and list of providers. The right sidebar contains sections for 'Sectoral initiatives', 'Locals initiatives', 'News', 'Speaking of IDEC...', 'Participation in INSPIRE Congress', and 'Activity indicators 2006-2009'.

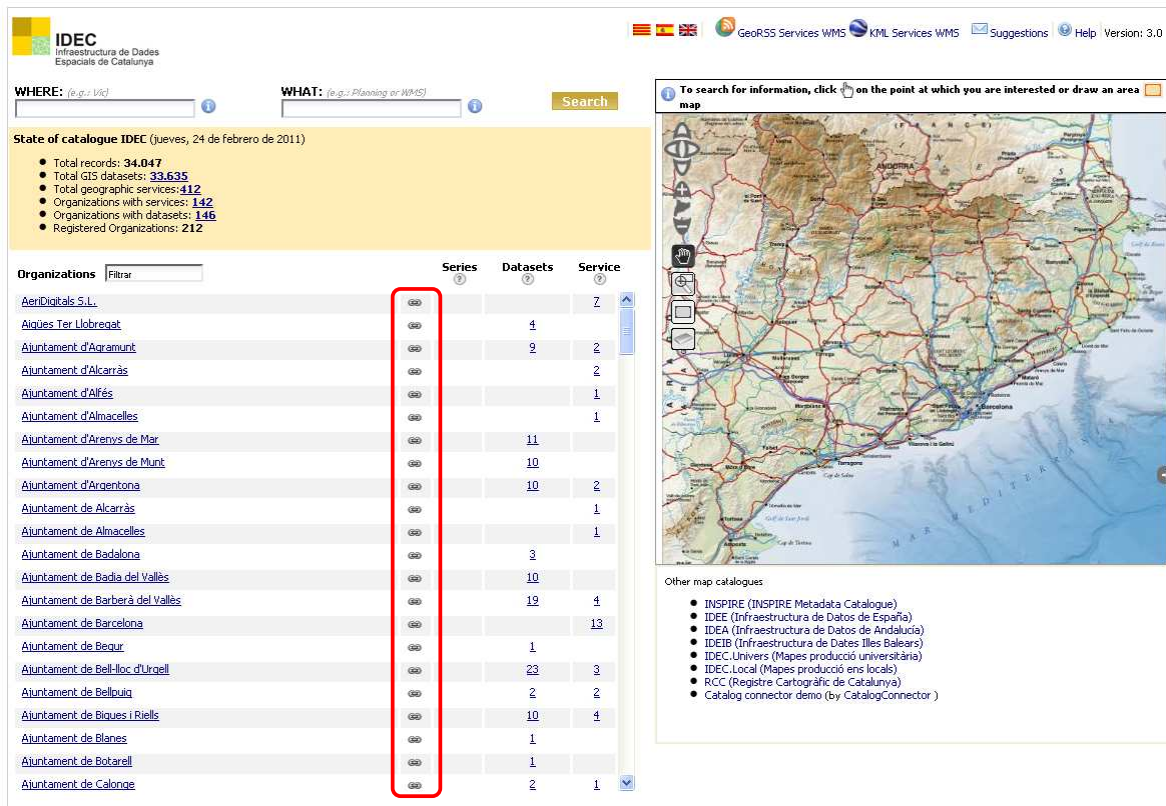
Figure 1. Access to the metadata catalog

The search can be performed by two different ways, but they have the same result:

1. Search by organization
2. Search by keywords

## 1. Search by organization

The catalog lists the organizations (or suppliers) with Data and Services metadata that are available. Besides displaying the metadata of each organization, the catalog also has a link to map server where you can see all published metadata (this link is displayed with a red box in Figure 2).



State of catalogue IDEC (Jueves, 24 de febrero de 2011)

- Total records: 34.047
- Total GIS datasets: 33.635
- Total geographic services: 412
- Organizations with services: 142
- Organizations with datasets: 146
- Registered Organizations: 212

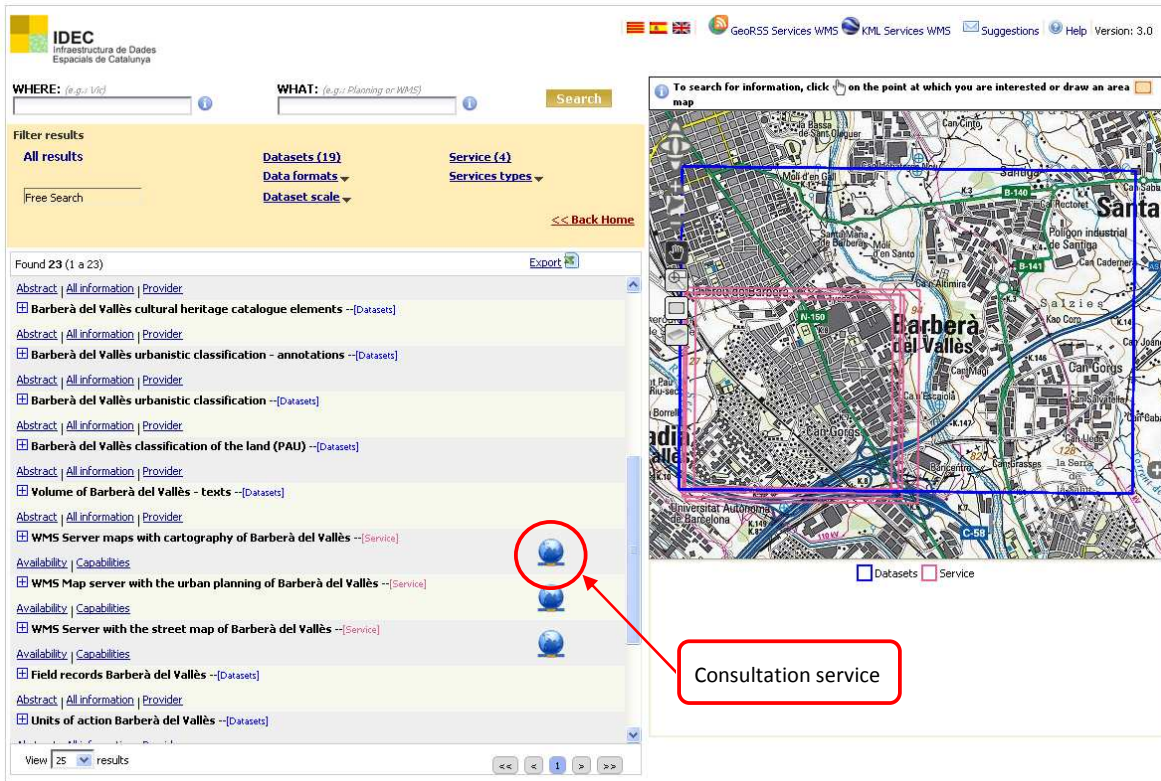
Organizations	Series	Datasets	Service
<a href="#">AerDigital S.L.</a>			2
<a href="#">Aiguies Ter Llobregat</a>		4	
<a href="#">Ajuntament d'Agramunt</a>		2	
<a href="#">Ajuntament d'Alcarràs</a>			2
<a href="#">Ajuntament d'Alfés</a>			1
<a href="#">Ajuntament d'Almacelles</a>			1
<a href="#">Ajuntament d'Arenys de Mar</a>		11	
<a href="#">Ajuntament d'Arenys de Munt</a>		10	
<a href="#">Ajuntament d'Argenterola</a>		10	2
<a href="#">Ajuntament de Alcarràs</a>			1
<a href="#">Ajuntament de Almacelles</a>			1
<a href="#">Ajuntament de Badalona</a>		3	
<a href="#">Ajuntament de Badia del Vallès</a>		10	
<a href="#">Ajuntament de Barberà del Vallès</a>		19	4
<a href="#">Ajuntament de Barcelona</a>			13
<a href="#">Ajuntament de Begur</a>		1	
<a href="#">Ajuntament de Bell-lloc d'Urgell</a>		23	3
<a href="#">Ajuntament de Bellpuig</a>		2	2
<a href="#">Ajuntament de Blanes i Riells</a>		10	4
<a href="#">Ajuntament de Blanes</a>			1
<a href="#">Ajuntament de Botarell</a>			1
<a href="#">Ajuntament de Calonge</a>		2	1

Other map catalogues:

- INSPIRE (INSPIRE Metadata Catalogue)
- IDEE (Infraestructura de Datos de España)
- IDEA (Infraestructura de Datos de Andalucía)
- IDEIB (Infraestructura de Datos Illes Balears)
- IDEC.Univers (Mapes producció universitària)
- IDEC.Local (Mapes producció ens locals)
- RCC (Registre Cartogràfic de Catalunya)
- Catalog connector demo (by CatalogConnector)

Figure 2. Catalog IDEC list of suppliers

If the search is very specific as might be to search the streetmap of 'Barberà del Vallès', we will select 'Barberà del Vallès' and it's displayed all published metadata. On the right side there are boxes coordinates metadata of 'Barberà del Vallès', in blue are data and in pink services. See Figure 3.



The screenshot shows the IDEC web interface. On the left, there is a search bar with 'WHERE:' and 'WHAT:' fields, and a 'Search' button. Below the search bar, there are filter options for 'All results', 'Datasets (19)', and 'Service (4)'. A list of search results is displayed, including various datasets and services related to 'Barberà del Vallès'. One service entry, 'WMS Server maps with cartography of Barberà del Vallès --[Service]', is highlighted with a red circle around its globe icon. A red arrow points from this icon to a red box labeled 'Consultation service'. On the right side of the interface, there is a map of the area around Barberà del Vallès, with several colored rectangles overlaid on it, indicating different data layers or services. The map includes labels for 'Barberà del Vallès', 'Santa', and 'C-58'.

Figure 3. Metadata published by the City Council of Barberà del Vallès

'Barberà del Vallès' City Council has published data and service metadata from the streetmap. If we click the service metadata query we will obtain the services WMS viewers IDEC (service is a type OGC:WMS). The display shows a window that warns that the map was successfully added. See Figure 4.

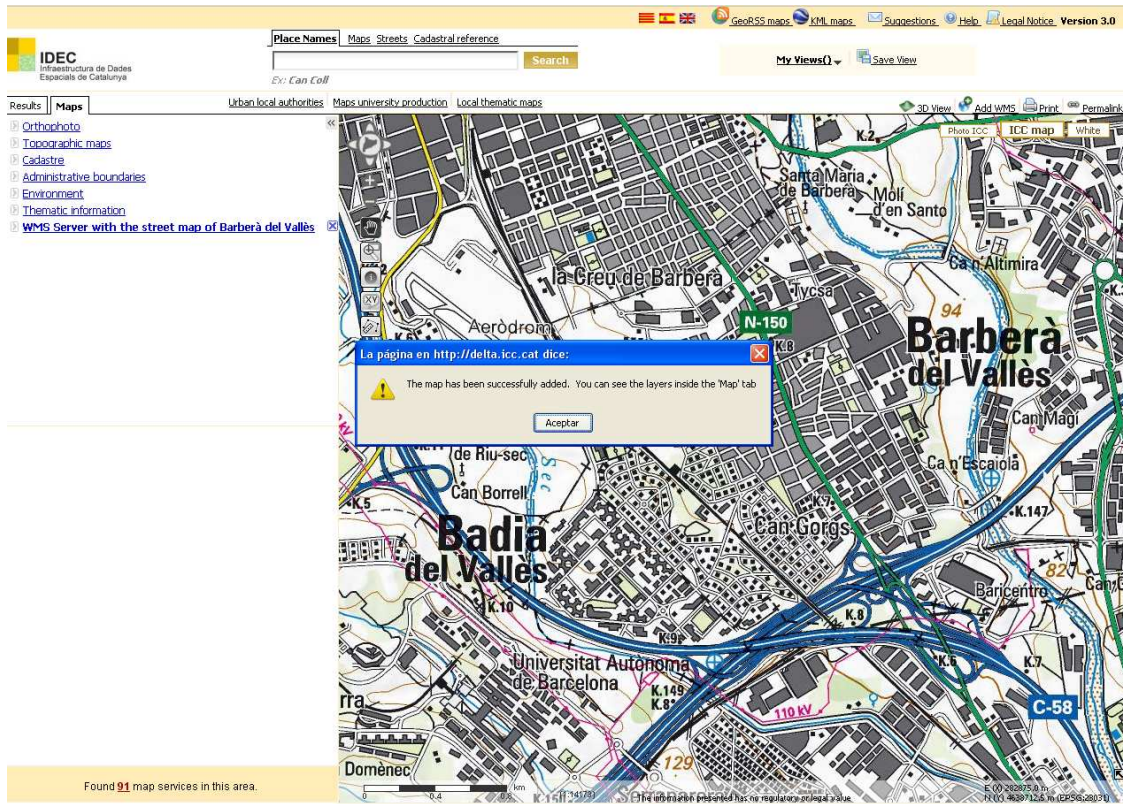
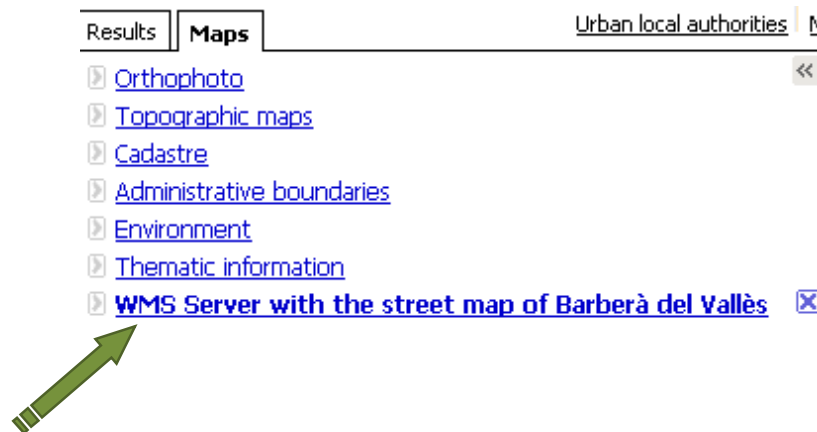
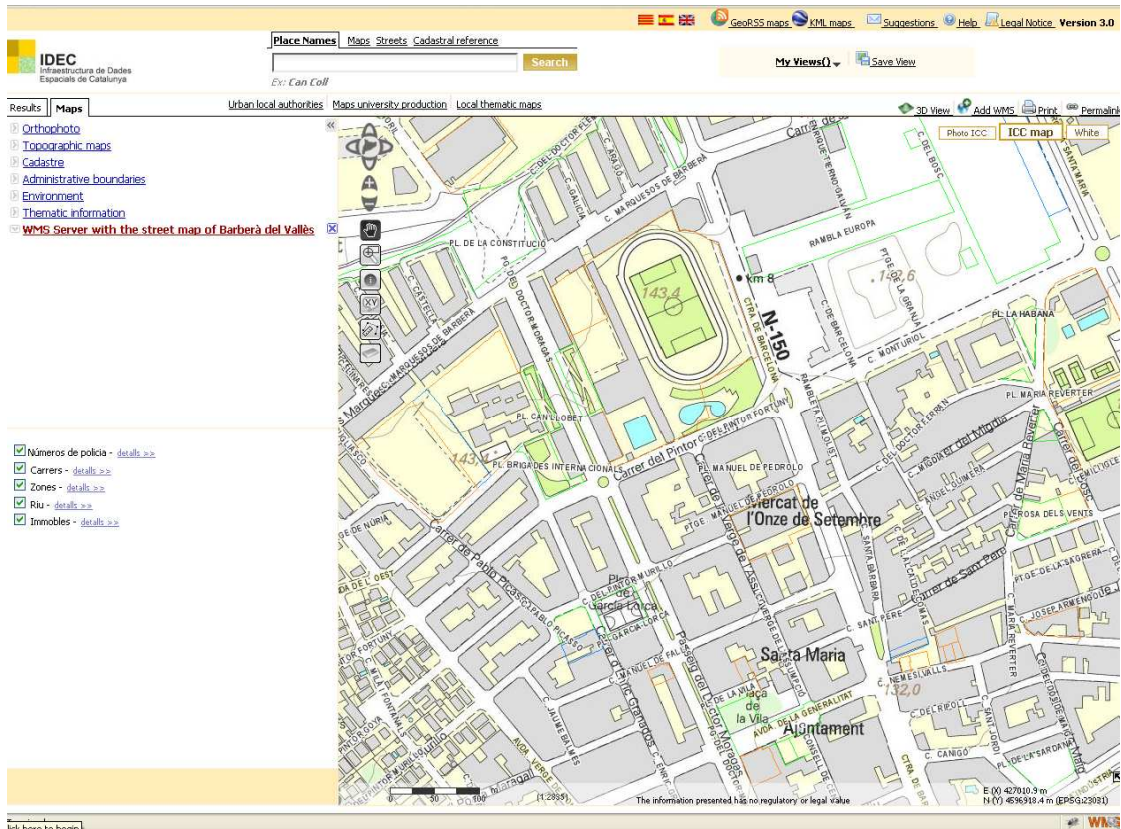


Figure 4. Viewer Services WMS IDEC.


To view the information you need to select the map “WMS Server with the streetmap of Barberà del Vallès” and then select layers service that appear below. See Figure 5.





**Figure 5.** Display maps with streetmap of Barberà del Vallès

However, if we want to see the data metadata of streetmap of 'Barberà del Vallès', click the link called "All information" and metadata catalog will show the data. See Figure 6.



**Dataset**

### Barberà del Vallès streets

Abstract: Barberà del Vallès street network (1:1000 scale)

Purpose: To do the street name searching (street directory)

ISO 19115 - Metadata

- [Metadata information](#)
- [Data information](#)
- [Data quality information](#)
- [Spatial representation information](#)
- [Reference system information](#)
- [Content information](#)
- [Distribution information](#)

**Metadata information**

File identifier: {6152983A-7941-4A35-9E47-C370E3D4C0A8}\_100000\_en

Language: English

Character set: 8859part1

Hierarchy level: dataset

Contact:

**Individual name:** Ramon Robles

**Organization name:** Ajuntament de Barberà del Vallès

**Position name:** Tècnic

**Contact information:**

**Phone:** 937189150

**Facsimile:** 937191815

**Address:**

Figure 6. View full metadata streetmap of 'Barberà del Vallès'

## 2. Search by keywords

To search by keywords it's necessary to enter in the catalog and to query by keyword in the search box, there are two types:

- **“WHERE”**: metadata search box that presents this keyword as a place.
- **“WHAT”**: search box where you will type the subject of metadata or the subject of metadata.

In these engines, as you write down the word appears with possible options to facilitate the search. Once we put the keyword search, click the button **Search**.

See an example of search in Figure 7.

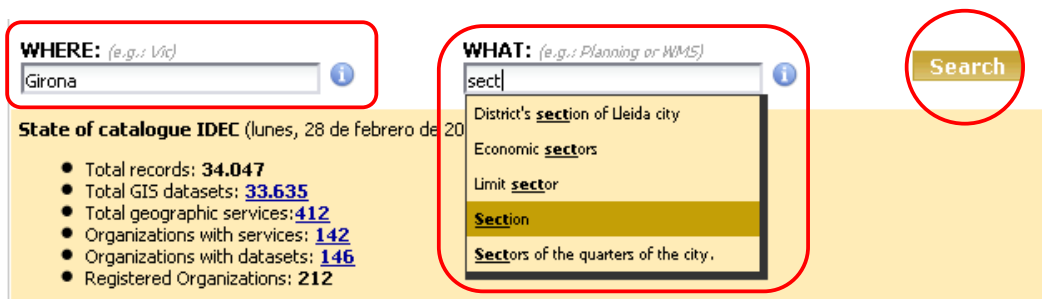
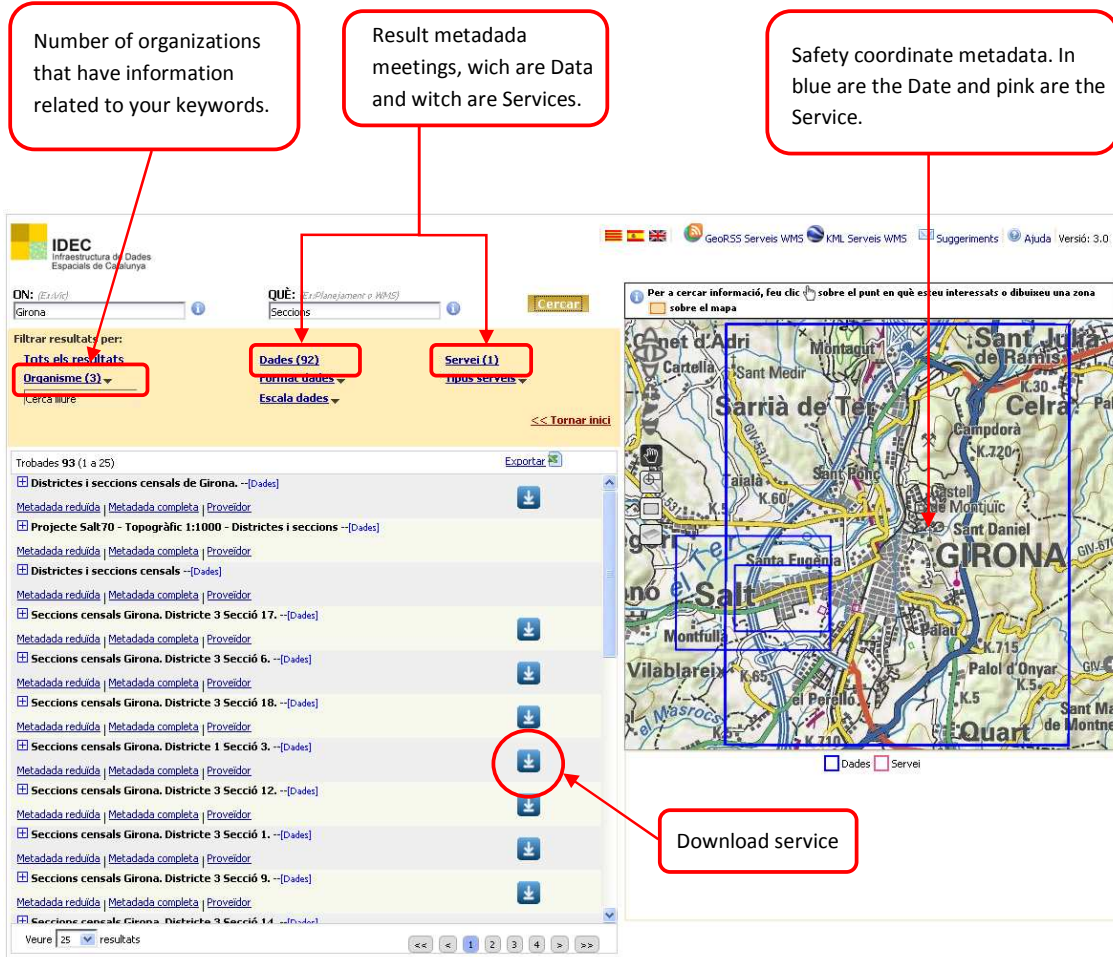


Figure 7. Safety Search the Catalogue

Once you have done your search for Sections and Girona keywords, appears the number of metadata found. See Figure 8.



Number of organizations that have information related to your keywords.

Result metadata meetings, wich are Data and witch are Services.

Safety coordinate metadata. In blue are the Date and pink are the Service.

Download service

Figure 8. Screen display of the metadata found from your search using keywords.